

Inside Dentistry
March 2024
Volume 20, Issue 3

Lasting Bonds for Traditional and 3D Printed Restorations

Pac-Dent's Rodin™ Dental Adhesive System provides reliable adhesion to a comprehensive array of dental materials

Joshua Grenier, DMD, MS

For Joshua Grenier, DMD, MS, the most satisfying part of dentistry is taking on complex, comprehensive cases that allow him to really change patients' lives. The dental office in which he currently practices, Eric George DMD & Associates, prides itself on being a one-stop shop. Grenier's comprehensive approach to dentistry began early in his career when he enlisted in the United States Air Force directly after he graduated from the Boston University Henry M. Goldman School of Dental Medicine in 2015. "In the Air Force, I was able to do a 2-year residency that they called the 'A-program,' which gave me the opportunity to do research and complete a master's degree in oral health," he says. In addition to developing a passion for comprehensive dentistry, Grenier was immediately interested in 3D printing technology, which is how he eventually got involved with Pac-Dent. "Pac-Dent's Rodin™ 3D printing resins are an incredible line of products, and the company does a lot of different things, so I wasn't surprised when they decided to roll out their own bonding system," he says of the recently released Rodin™ Bond Dental Adhesive System. "I've been using Rodin Bond for 2 or 3 months now, and it's really made an impact and become my go-to bonding agent."

Rodin Bond is a versatile light-cure dental adhesive material designed for direct and indirect bonding applications. It incorporates cutting-edge glass filler technology to strengthen the hybrid zone and deeply permeate dentin tubules, providing exceptional bond strength that outperforms conventional unfilled adhesive systems. In addition to Rodin Bond, the Rodin Bond Dental Adhesive System also includes a desensitizing primer, SensiGuard™, which promotes bonding, seals dentin tubules to prevent sensitivity, and reduces the risk of caries formation beneath restorations. Incorporating SensiGuard significantly improves shear bond strength and adhesion to direct and indirect surfaces, extending the lifespan of restorations.

According to Grenier, Rodin Bond is specially designed to be able to bond to Pac-Dent's Rodin 3D printing resins "The adhesive system utilizes a proprietary GPDM monomer that bonds very well to tooth structure," he says, "but Pac-Dent also informed the development of the bonding agent's incredibly esthetic highly filled resin

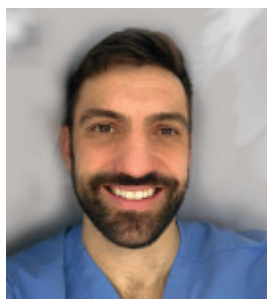
matrix through the development of their 3D printing resins, which means that you can bond to 3D printed resins extremely well."

Grenier also appreciates Rodin Bond's modernized flip-top bottle design that facilitates more efficient application "With a multistep system, that efficiency of a modernized flip-top bottle makes a big difference," he says. Whether it be a Class V composite, an inlay, or a 3D printed crown, the Rodin Dental Adhesive System allows clinicians to get it right the first time, prevent failure, and ensure a durable, long-lasting bond.

MANUFACTURER INFORMATION

PAC-DENT, INC.

pac-dent.com • 909-839-0888



Inside Dentistry

Articles
Archive
CE
eBooks
News
Products
Subscribe

View All of Our Brands

Inside Dentistry
Compendium
Inside Dental Technology
Inside Dental Hygiene
CDE World

Contact Us

About Us
Advertisers

